

**JUC-1M
JUC-068M**

**ULTRAMINIATURE AND HERMETICALLY SEALED
THERMOSTAT**

JUC-1M and JUC-068M are both UL approved contact-induction sealed type thermostat. They weight light and packaged small. They are high precision temperature control devices with outstanding general-purpose function, suitable for temperature control and overheat protection in equipments of aerospace and other field.



Environmental conditions					
No.	Item		Data		
1	Environmental level		I	II	III
2	Ambient temperature range		-65℃ to +125℃		
3	Low atmospheric pressure		1.06 kPa	1.06 kPa	1.06 kPa
4	Vibration	Frequency	10 to 55 Hz	10 to 500 Hz	10 to 2000 Hz
		Acceleration	Double amplitude 1.5mm	10G	15G
5	Shock	Acceleration	15G	50G	50G
		Pulse duration	11ms	11 ms	11 ms
6	Acceleration			20G	50G

**JUC-1M
JUC-068M**

**ULTRAMINIATURE AND HERMETICALLY SEALED
THERMOSTAT**

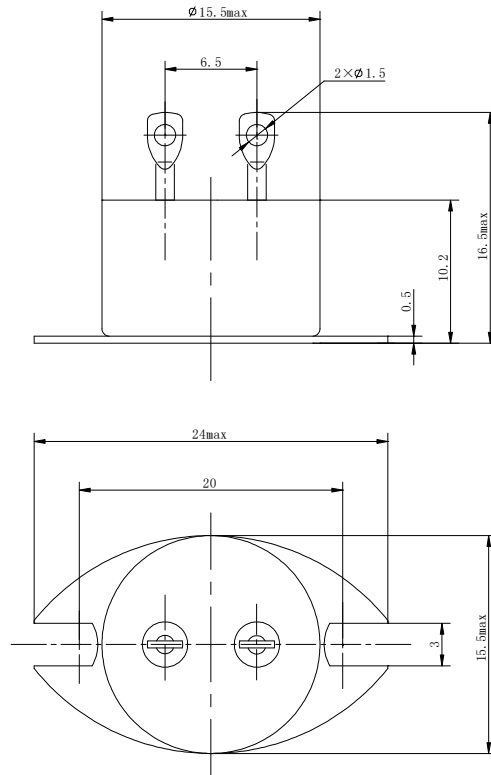
Specifications

Contact arrangement	1 form B, 1 form A 1D 或 1H			
Operating temperature range	-10℃ to +150℃			
Operating temperature tolerance	See main technical data table			
Temperature restoration	See main technical data table			
Contact resistance	Before life test	50mΩ max	Contact rating	resistive: : JUC-1M: 1A, 28VDC 1A, 115/220VAC (400/50Hz) JUC-068M: 5A, 28VDC 3A, 115/220VAC (400/50Hz)
	After life test	100mΩ max		
Insulation resistance	Under normal condition	500MΩ min (500VDC)		
	Under high temperature and high humidity	10MΩ min (500VDC)		
Dielectric strength (50Hz)	Under normal condition	500 Vrms	Electrical life expectancy	JUC-1M: 2×10 ⁴ Operations JUC-068M: 1×10 ⁴ Operations
	Under low atmospheric pressure	350 Vrms	Weight	9g max

Main technical data table

Main technical data table				
Part No.	Normal Operating temperature value	Operating temperature tolerance	Temperature restoration range	
−10℃ to +110℃	Any value within range −10℃ to +110℃	±3℃, ±5℃, ±7℃	Upper limit	Below corresponding operating temperature value 3℃
			Lower limit	Below corresponding operating temperature value 15℃
+111℃ to +150℃	Any value within range +111℃ to +150℃		Upper limit	Below corresponding operating temperature value 3℃
			Lower limit	Below corresponding operating temperature value 20℃

Outline mounting dimensions



Ordering information

JUC-068M/35±5℃-1A-III

Environmental level

Contact arrangement

Operating temperature and tolerance

Type

Beijing AC Vision Electronic Co.,Ltd.

www.acvisioncn.com