

J18 Series\J18 Accessory Series\J18 Male Thread Lock Part Clipper

Male Thread Lock Part Character

◆ Male thread locking part applies to J18 float mounting low frequency solder series and J18 crimp series;

◆ Style:

Common type – Direct installed into connector.

-B – suits one-body metal cable clipper.

◆ Inside female part thread –

1. M2.5

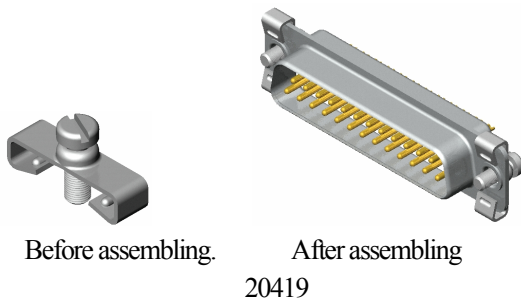
2. #4-40UNC.

Common Male Thread Lock Part

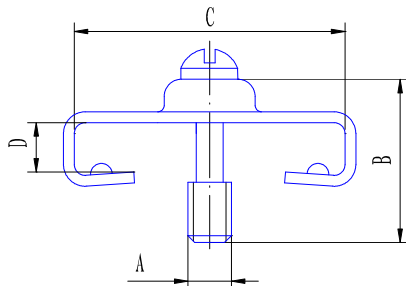
◆ 20419、20419-Y、20419-C

◆ 20420、20420-Y、20420-C

3D Diagram



Outline Size



Order	A	B	C	D	Remark
20419	M2.5	6.8	13	1.4	Apply to J18E, J18A, J18B and J18C.
20419-Y	#4-40UNC	6.8	13	1.4	
20419-C	M2.5	6	13	1.4	
20420	M2.5	6.8	16	1.4	Apply to J18D.
20420-Y	#4-40UNC	6.8	16	1.4	
20420-C	M2.5	6	16	1.4	

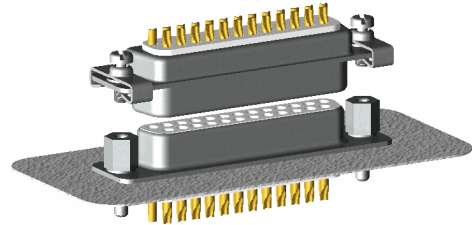
User Instruction

◆ Male thread lock part can be installed into J18 float mounting series directly;

◆ Gently insert mail thread part into female section. Higher force may cause damage on parts.

Male Part Mated with Common Type

◆ Following diagram shows male thread locking part suits female thread locking part.



◆ Compatible male and female part table:

Male Part Code	Mated female Part Code	Character
20419 20420 20419-C 20420-C	20418-1	Screw head is 4.5mm long, overall 10mm, inside and outside screw are both M2.5.
	20418-2	Screw head is 4.5mm long, overall 12.5mm, inside and outside screw are both M2.5.
	20418-3	Screw head is 5.5 long, overall 16, inside screw is M2.5 and outside screw is M3.
	20418-4	Screw head is 5.5 long, overall 14, inside screw is M2.5 and outside screw is M3.
	20418-5	Screw head is 5.5 long, overall 14, inside and outside screw are both M2.5.
	20418-6	Screw head is 5.5 long, overall 14mm, inside and outside screw are both M2.5, with 1.5mm neck.
	20418-7	Screw head is 5.5 long, overall 16mm, inside and outside screw are both M2.5, with 2mm neck.
	20418-2B	Screw head is 5.5 long, overall 16, inside and outside screw are both M2.5, with 5.5 supporting tube.
	20418-2C	Screw head is 5.5 long, overall 18, inside and outside screw are both M2.5, with 5.5 supporting tube.
	20418-2D	Screw head is 5.5 long, overall 20, inside and outside screw are both M2.5, with 5.5 supporting tube.
20419-Y 20420-Y	20418-1-Y	Screw head is 4.5mm long, overall 10mm, inside and outside screw are both #4-40UNC
	20418-2-Y	Screw head is 4.5mm long, overall 12.5mm, inside and outside screw are both #4-40UNC
	20418-5-Y	Screw head is 4.5mm long, overall 14mm, inside and outside screw are both #4-40UNC, with 1.5 shoulders.
	20418-2D-Y	Screw head is 5.5 long, overall 20, inside and outside screw are both #4-40UNC with 5.5 supporting tube.

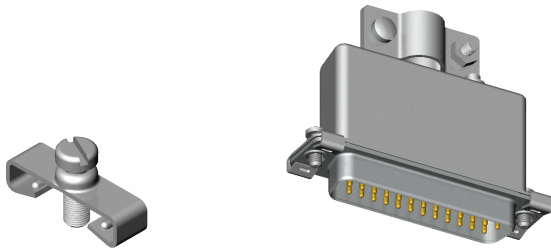
J18 Series\J18 Accessory Series\J18 Male Thread Lock Part Clipper

“-B” Type Male Thread Lock Part

◆ 20419-B、20419-B-Y

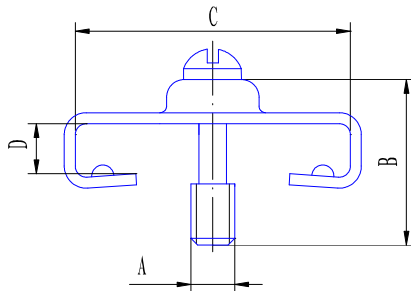
◆ 20420-B、20420-B-Y

3D Diagram



20419-B

Outline Size



Order Mark	A	B	C	D	Remark
20419-B	M2.5	6.8	13.5	1.8	Apply to J18E, J18A, J18B, and J18C, suited with one-body metal cable cover.
20419-B-Y	#4-40UNC	6.8	13.5	1.8	
20420-B	M2.5	6.8	16.5	1.8	Apply to J18D, suited with one-body metal cable cover.
20420-B-Y	#4-40UNC	6.8	16.5	1.8	

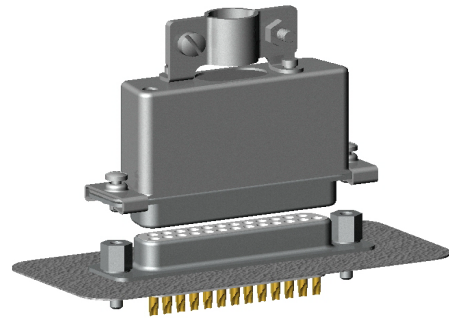
■ Use Instruction

◆ Male thread locking part can be installed in J18 float mounting series with one-body metal cable clipper;

◆ Gently insert mail thread part into female section. Higher force may cause damage on parts.

■ Male Part Mated with “-B” Type

◆ Male thread locking part has to be assembled with one-body metal cable clipper first before plug into female thread lock part. See the following diagram for reference:



◆ One-body metal cable clipper and female thread locking part table :

Male Thread Lock Code	Mated One-body Metal Cable Clipper Code	Mated Female Thread Lock Part Code
20419-B 20420-B	J18E-027(22) J18A-028(22) J18B-029(22) J18C-030(22) J18D-031(22)	20418-1 20418-2 20418-3 20418-4 20418-5 20418-6 20418-7 20418-2B 20418-2C 20418-2D
20419-B-Y 20420-B-Y	J18E-027(22) J18A-028(22) J18B-029(22) J18C-030(22) J18D-031(22)	20418-1-Y 20418-2-Y 20418-5-Y 20418-2D-Y