

**J18 Series\J18 Mix Mounting Series\J18 Mix Fix Mounting Excluding Low Frequency Series**

**Product Character Introduction**

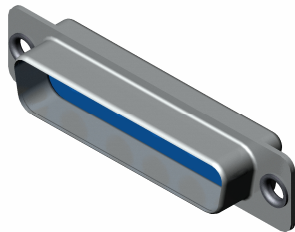
- ◆ Without low frequency contact components.
- ◆ Mounting structure - Floating or fix mounting;
- ◆ Suitable for installing with high frequency, high voltage and high power contactor components;
- ◆ Connector:
  1. Pin socket,
  2. Receptacle socket.

**Product Outline Size**

**Plug**

- ◆ J18E-2W2P 、 J18A-3W3P 、 J18B-5W5P 、 J18C-8W8P

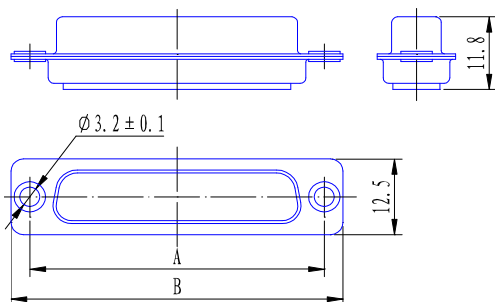
**Product 3D Diagram**



J18B-5W5P

**Product Outline Size**

J18 × - × W × P outline size



Series Part No.	A	B	Ordering Marking
J18E-2W2P	25	31	Part number refers to special contact if any and nomenclature.
J18A-3W3P	33.3	39.3	
J18B-5W5P	47	53.2	
J18C-8W8P	63.5	69.5	

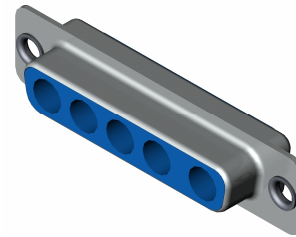
**Mounting Hole Size**

See Section “J18 Series Mounting Hole Size”.

**Receptacle**

- ◆ J18E-2W2S 、 J18A-3W3S 、 J18B-5W5S 、 J18C-8W8S

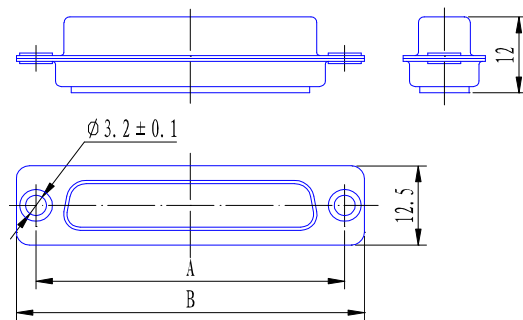
**Product 3D Diagram**



J18B-5W5S

**Product Outline Size**

J18 × - × W × S outline size



Series Part No.	A	B	Ordering Marking
J18E-2W2S	25	31	Part number refers to special contact if any and nomenclature.
J18A-3W3S	33.3	39.3	
J18B-5W5S	47	53.2	
J18C-8W8S	63.5	69.5	

**Mounting Hole Size**

See Section “J18 Series Mounting Hole Size”.