

J18 Series\ J18 Accessory Series\ **J18 Mix Installing and Removal Tool**

■ **Installing and Removal Tool**

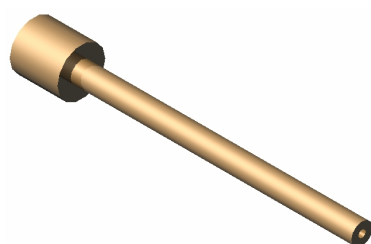
Characteristic Introduction

◆ J18 mix assemble and disassemble tools are used for special contact components. Tool set including installing tool and removal tool for selected components.

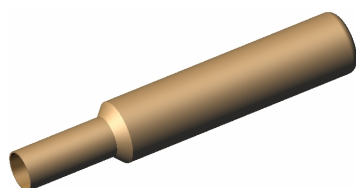
◆ Tool sets are not included in the J18 series parts. Special order is requested

■ **Tool Outline Size**

3D Diagram of Installing and Removal Tool



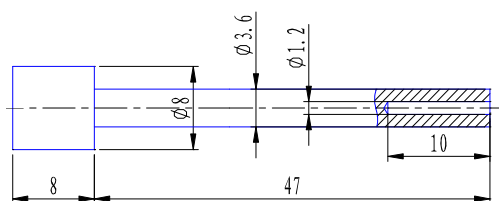
Extraction Tool



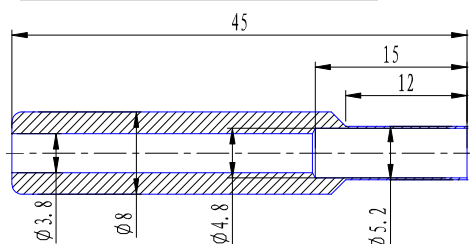
Removal Tool

Outline Size of Removal Tool

Outline Size of Extraction Tool



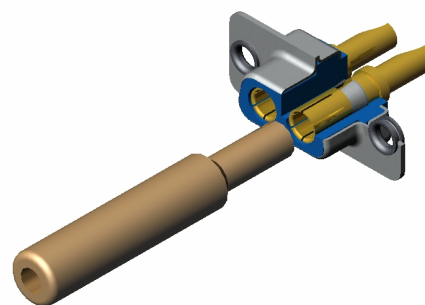
Outline Size of Removal Tool



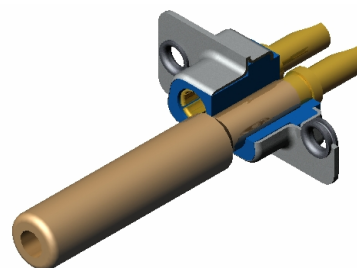
■ **Note**

◆ Installing and removal tools are made of copper, gentle and steady force are requested when using.

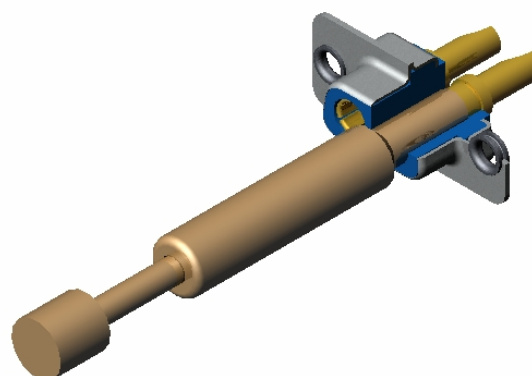
■ **Operation Method of Installing and Removal Tool**



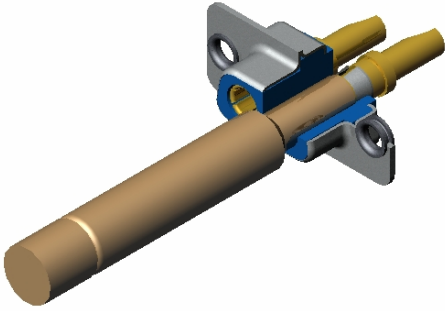
Insert removal tools from the interface of special contacts.



Push down removal tool until completely cove the locking ring on special contact.



Insert the extraction tool through the central hole of the removal tool.



Push extraction tool until special contact out.