

J18 Series\J18 Low Frequency Series\J18 Fix Crimp Mounting Series

Product Character Introduction

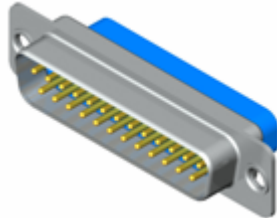
- ◆ Terminal with connection wire are crimped by using special crimping tool.
- ◆ Mounting style: Fix or floating.
- ◆ Contact parts are installed or removed by using special tools.
- ◆ Connector: 1. Pin socket, 2. Receptacle socket.

Product Outline Size

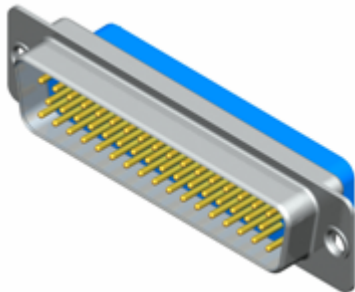
Plug

- ◆ J18EMA-9P、J18AMA-15P、J18BMA-25P、J18CMA-37P、J18DMA-50P

Product 3D Diagram



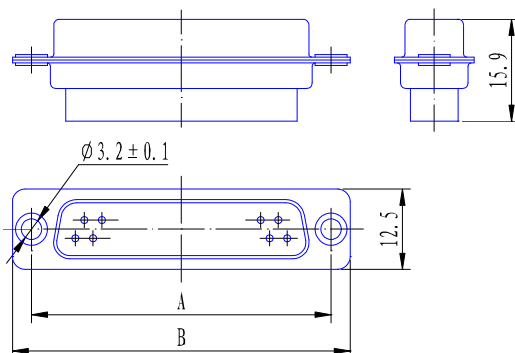
J18BMA-25P



J18DMA-50P

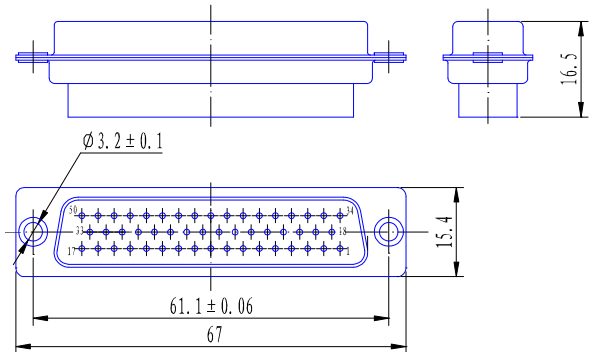
Product Outline Size

J18 × MA- × P outline size



Ordering Marking	A	B
J18EMA-9P	25	31
J18AMA-15P	33.3	39.3
J18BMA-25P	47	53.2
J18CMA-37P	63.5	69.5

J18DMA-50P outline size



Mounting Hole Size

See Section "J18 Series Mounting Hole Size".

Others

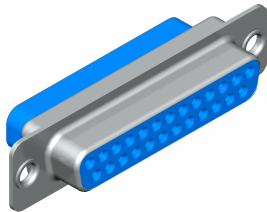
- ◆ Scope of mated cable area: $0.2 \sim 0.4\text{mm}^2$, 0.3mm^2 recommended.
- ◆ Crimp tool code: YJQ-W1 (offered);
- ◆ Assemble and disassemble tool code:
20 TZX – Disassemble tool (sleeve);
20-P – Assemble tool (Extrusion).

J18 Series\J18 Low Frequency Series\J18 Fix Crimp Mounting Series

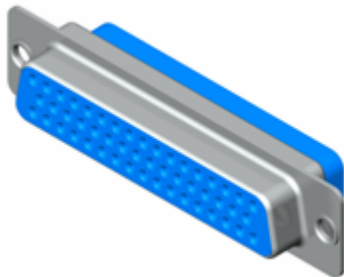
Receptacle

◆ J18EMA-9S、J18AMA-15S、J18BMA-25S、J18CMA-37S、J18DMA-50S

Product 3D Diagram



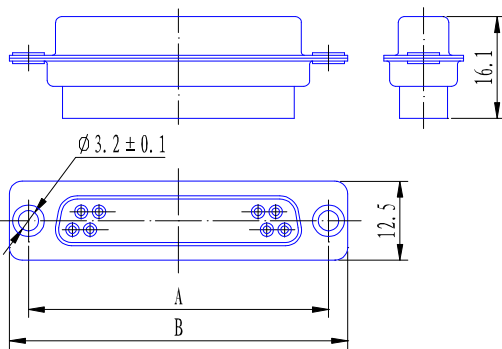
J18BMA-25S



J18DMA-50S

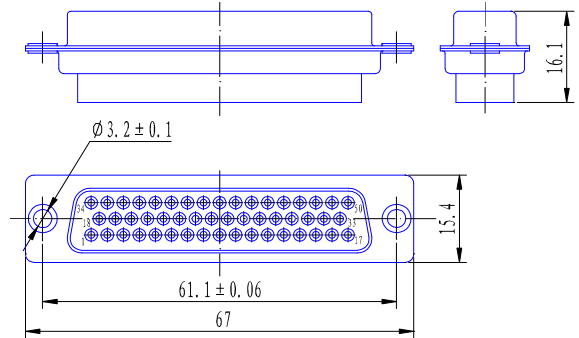
Product Outline Size

J18 × MA- × S outline size



Order Mark	A	B
J18EMA-9S	25	31
J18AMA-15S	33.3	39.3
J18BMA-25S	47	53.2
J18CMA-37S	63.5	69.5
J18DMA-50S	---	---

J18DMA-50S outline size



Mounting Hole Size

See Section “J18 Series Mounting Hole Size”.

Others

◆ Scope of mated cable area: 0.2 ~ 0.4mm², 0.3mm² recommended.

◆ Crimp tool code: YJQ-W1 (offered);

◆ Assemble and disassemble tool code:

20 TZX – Disassemble tool (sleeve);

20-P – Assemble tool (Extrusion).