

J18 Series\J18 Accessory Series\J18 Female Thread Lock Part

Female Thread Locking Part

Character

◆ Female Thread Lock Parts are customer designed upon user per various specification and purposes.

◆ Female thread locking part is used to fit J18 fix mounting series for connecting with mounting panel.

◆ There are three categories of female locking parts in structure

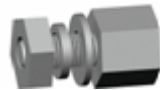
1. Common style: 20418-1、20418-2、20418-3、20418-4、20418-5、20418-1-Y、20418-2-Y、20418-5-Y
2. Supporting tube style: 20418-2B、20418-2C、20418-2D、20418-2D-Y.
3. Neck style: 20418-6、20418-7.

◆ Common type applies to J18 fix mounting series. Supporting tube applies to straight inserting PCB series and neck style applies to J18 back board mounting series.

Female Thread Lock Part Outline Size

Female Thread Lock Part 3D Diagram

◆ Common Female Thread Lock Part

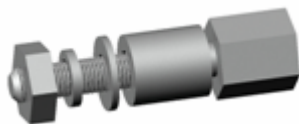


Before assembling.

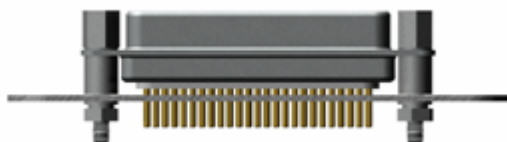


After assembling in connector and mounting board

◆ Female Thread Lock Part with Supporting Tube

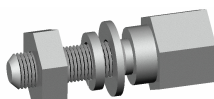


Before assembling.

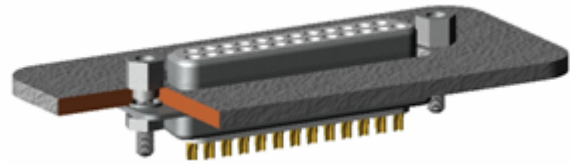


After assembling in connector and PCB

◆ Neck style Female Thread Locking Part



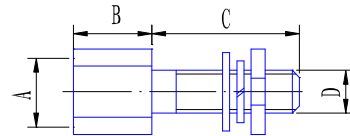
Before assembling.



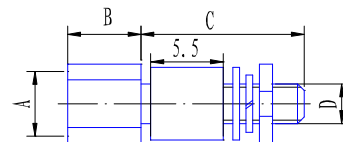
After assembling in connector and mounting board

Female Thread Lock Part Outline Size

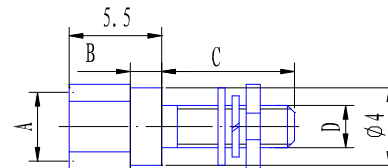
Common Female Thread Locking Part



Female Thread Locking Part with Supporting Tube



Female Thread Locking Part with Neck



Type	Code	A	B	C	D
Common Female Thread Lock Part	20418-1	M2.5	4.5	5.5	M2.5
	20418-2	M2.5	4.5	8	M2.5
	20418-3	M2.5	5.5	10.5	M3
	20418-4	M2.5	5.5	8.5	M3
	20418-5	M2.5	5.5	8.5	M2.5
	20418-1-Y	#4-40UNC	4.5	5.5	M2.5
	20418-2-Y	#4-40UNC	4.5	8	M2.5
	20418-5-Y	#4-40UNC	5.5	8.5	M2.5
Female Thread Lock Part with Supporting Tube	20418-2B	M2.5	5.5	10.5	M2.5
	20418-2C	M2.5	5.5	12.5	M2.5
	20418-2D	M2.5	5.5	14.5	M2.5
	20418-2D-Y	#4-40UNC	5.5	14.5	M2.5
Female Thread	20418-6	M2.5	1.5	8.5	M2.5

J18 Series\J18 Accessory Series\J18 Female Thread Lock Part

Lock Part with Neck	20418-7	M2.5	2	10.5	M2.5
---------------------	---------	------	---	------	------

User Instruction

◆ Female thread locking part is used with male thread accessories.

◆ Detail application of various thread locking parts table:

Type	Code	Mounting Character
Common Female Thread Lock Part	20418-1	Apply to float mounting back of board, board thickness ≤ 1
	20418-2	Apply to float mounting back of board, board thickness ≤ 1
	20418-3	Apply to float mounting front of board, board thickness ≤ 4.5
	20418-4	Apply to float mounting front of board, board thickness ≤ 2.5
	20418-5	Apply to float mounting front of board, board thickness ≤ 2.5
	20418-1-Y	Apply to float mounting back of board, board thickness ≤ 1
	20418-2-Y	Apply to float mounting back of board, board thickness ≤ 1
	20418-5-Y	Apply to float mounting front of board, board thickness ≤ 2.5
Female Thread Lock Part with Supporting Tube	20418-2B	Apply to mounting back of board, board thickness ≤ 1
	20418-2C	Apply to straight inserting PCB, PCB thickness < 2
	20418-2D	Apply to straight inserting PCB, PCB thickness < 4
	20418-2D-Y	Apply to straight inserting PCB, PCB thickness < 4
Female Thread Lock Part with Neck	20418-6	Apply to fix mounting back of board, board thickness: 1.5 ~ 2
	20418-7	Apply to float mounting back of board, board thickness: 12 ~ 2.5

Male Part Mated with Female

Thread Lock Part

◆ Female thread locking part suits male thread locking

part or other accessory. See the following diagram:

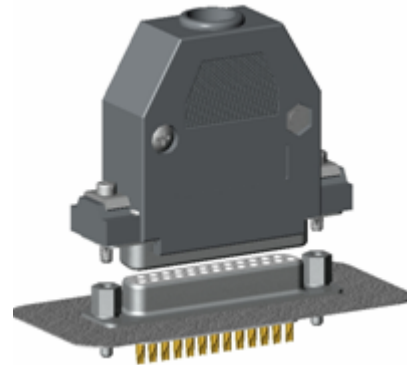


Diagram of female thread locking part mated with plastic clipper

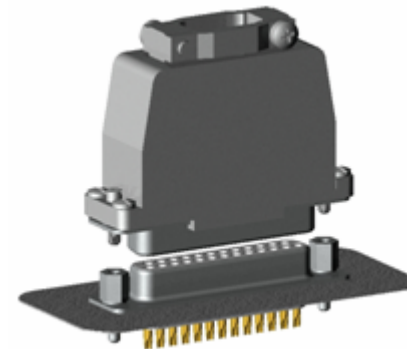


Diagram of female thread locking part mated with twp-body cable clipper

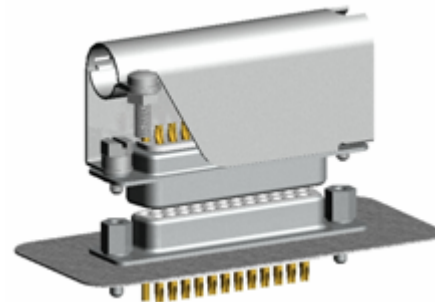


Diagram of female thread locking part mated with cable clipper part

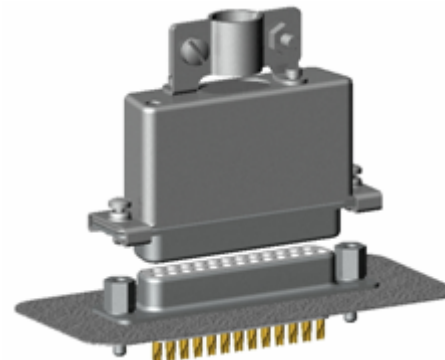


Diagram of female thread locking part mated with common one-body metal cable clipper and male thread

J18 Series\J18 Accessory Series\J18 Female Thread Locking Part

lock part

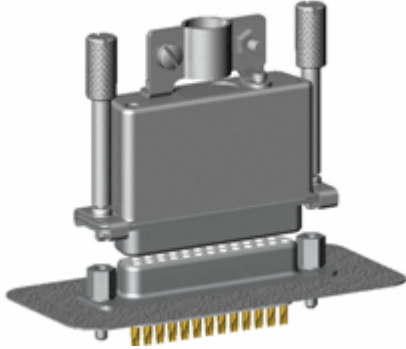


Diagram of female thread locking part mated with W and W-Y type one-body metal cable clipper

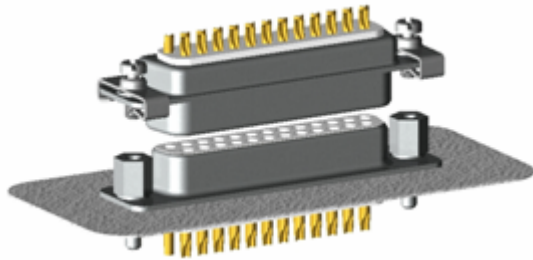


Diagram of female thread locking part
Mated with male thread lock part

◆ The following is male thread lock part mated female part or other accessories:

Female Part Type	Female Part Code	Mated Male Thread Locking Part or Other Accessories
Common female thread lock part	20418-1	Plastic Cable Clipper; Two-body Cable Clipper; Cable Clipper Component; W type One-body Metal Cable Clipper; Male Thread Lock Component (Type 20419-C and 20420-C should mate with 20418-1 and 20418-2).
	20418-2	
	20418-3	
	20418-4	
	20418-5	
	20418-1-Y	W-Y type One-body Metal Cable Clipper; Male Thread Lock Component (including 20419-Y, 20419-B-Y, 20420-Y and 20420-B-Y only).
	20418-2-Y	
	20418-5-Y	
Female	20418-2D-Y	

thread lock part with supporting tube	20418-2B	Plastic Cable Clipper; Two-body Cable Clipper; Cable Clipper Component; W type One-body Metal Cable Clipper; Male Thread Lock Component (including 20419, 20419-B, 20420 and 20420-B).
	20418-2C	
	20418-2D	
Female thread lock part with neck	20418-6	Plastic Cable Clipper; Two-body Cable Clipper; Cable Clipper Component; W type One-body Metal Cable Clipper; Male Thread Lock Component (including 20419, 20419-B, 20420 and 20420-B).
	20418-7	