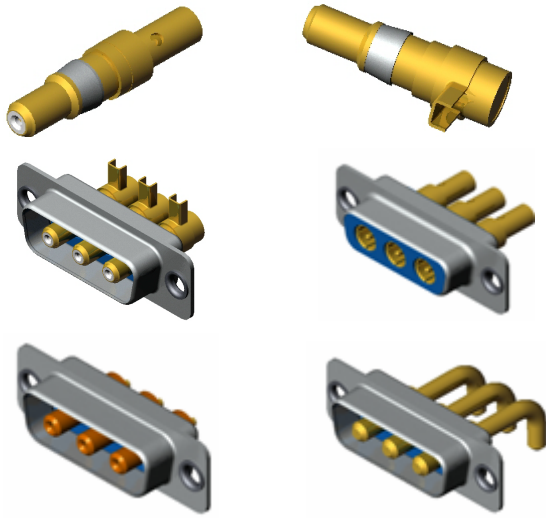


J18 Series\J18 Mix Mounting Series\J18 Mix Mounting Special Contactor Series

Special contact components Introduction



◆ J18 mix mounting special contactor include high frequency plug, high frequency receptacle, high voltage pin, high power pin and high power socket;

◆ J18 mix mounting series product available to assemble with one (e.g. high frequency contact) or more special contact components such as high frequency or/and high voltage contacts)

◆ J18 mix mounting special contact component must assembled with J18 series products and can not used as an individual product.

◆ High frequency plug、high voltage socket and high power pin can only be assembled within J18 mix mounting series plug. High frequency receptacle、high voltage pin and high power socket can only be assembled within J18 mix mounting series receptacle.

◆ Components sold separate, after assembled with wires, could be install into the product by user self.

◆ Two-body cable clipper is recommend for special contact connector.

Special Contact List

Contact kind		Contact code	Mated cable or character
High frequency contact	Straight high frequency coaxial plug	GAP	SFF-50-2-1.5
		GA2P	SFF46-50-1
		GA6P	SFF-50-2.5
	Straight high frequency coaxial receptacle	GAS	SFF-50-2-1.5
		GA4S	SFF-50-2-1
		GA6S	SFF-50-2.5
		GA2IIS	SFF46-50-1
		GA4IIS	SFF-50-2-1
	Bent high frequency coaxial plug	GP	SFF-50-2-1.5
		G4P	SFF-50-2-1
	Bent high frequency coaxial receptacle	GS	SFF-50-2-1.5
		G2S	SFF46-50-1
High voltage contact	High voltage pin	YP	
	High voltage socket	YS	
High power contact	Solder high power pin	HP	Solder bootΦ2.2
		H2P	Solder bootΦ4.6
		H4P	Solder bootΦ3.8
	Bent Inserting PCB high power pin	HWP	Termination Dia. Φ3.2
	Solder high power socket	HS	Solder bootΦ2.2
		H2S	Solder bootΦ4.6
		H4S	Solder bootΦ3.8
	Straight Inserting PCB high power socket	HNS	Termination Dia. Φ3.2

High Frequency Contact component

Introduction

◆ Style:

Vertical – Component center line superposition with connecting wire center line.

Bent – Component center line perpendicular with connection wire center line.

◆ Component and connecting wire are soldered.

◆ High frequency components sold separate, after soldering with wires, could be install into the product by user self.

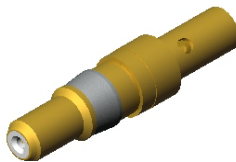
◆ Plug and socket used for high frequency contact components can be randomly choose as far as both match to each other.

Contact Outline Size

Vertical High Frequency Coaxial Plug

◆ GAP、GA2P、GA6P

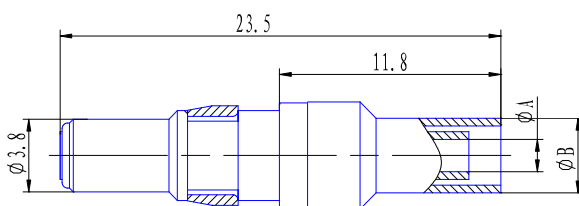
Plug 3D Diagram



GAP

Plug Outline Size

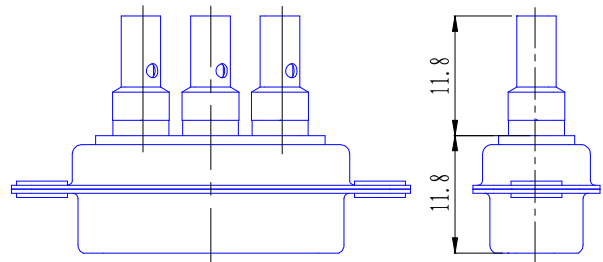
GAP、GA2P、GA6P outline size



Contact code	A	B	Mated cable
GAP	1.7	3.9	SFF-50-2-1.5
GA2P	1.2	3.4	SFF46-50-1
GA6P	2.8	5.6	SFF-50-2.5

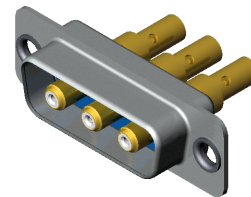
Product Size With Plug

Take J18A-3W3P shell for an example

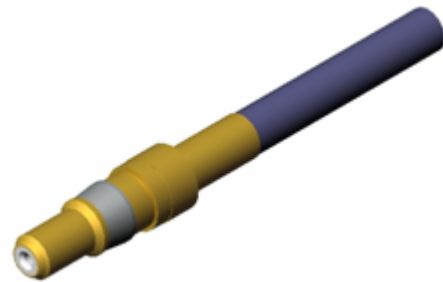


Product Diagram with Plug

Take J18A-3W3P shell for an example



Plug Wiring Diagram

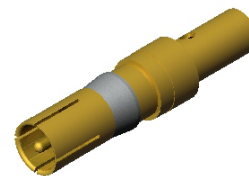


Vertical High Frequency Coaxial

Receptacle

◆ GAS、GA4S、GA6S、GA2IIS、GA4IIS

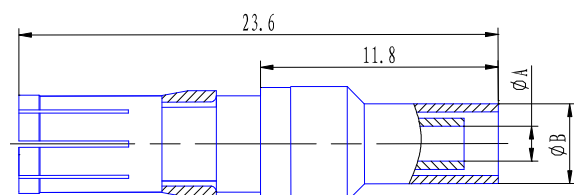
Receptacle 3D Diagram



GAS

Receptacle Outline Size

GAS、GA4S、GA6S、GA2IIS、GA4IIS outline size



Contact code	A	B	Mated cable
GAS	1.7	3.9	SFF-50-2-1.5

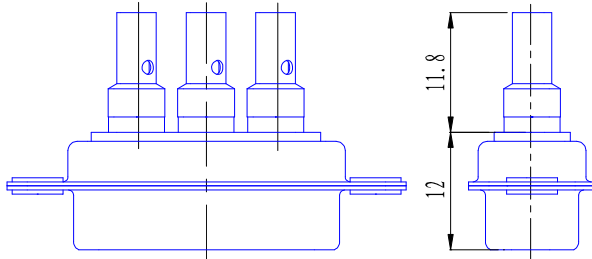
Beijing AC Vision Electronic Co., Ltd.

J18 Series\J18 Mix Mounting Series\J18 Mix Mounting Special Contact Series\High Frequency Contact

GA4S	2.3	4.8	SFF-50-2-1
GA6S	2.8	5.6	SFF-50-2.5
GA2IIS	1.2	3.4	SFF-50-2-1
GA4IIS	2.3	4.8	SFF-50-2.5

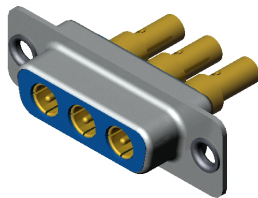
Product Size with Receptacle

Take J18A-3W3S shell for an example

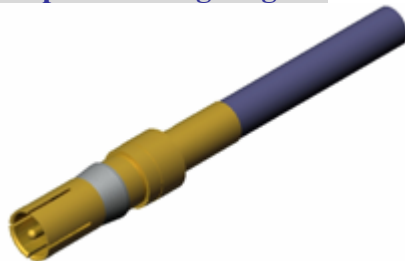


Product Diagram with Receptacle

Take J18A-3W3S shell for an example



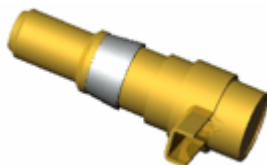
Receptacle Wiring Diagram



Bent High Frequency Coaxial Plug

◆ GP、G4P

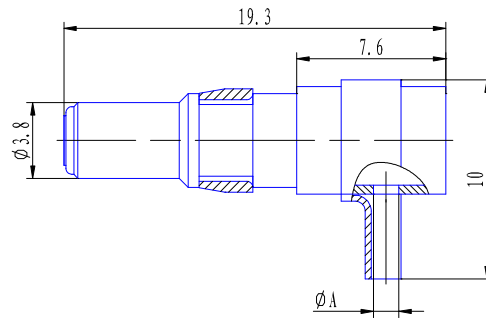
Plug 3D Diagram



GP

Plug Outline Size

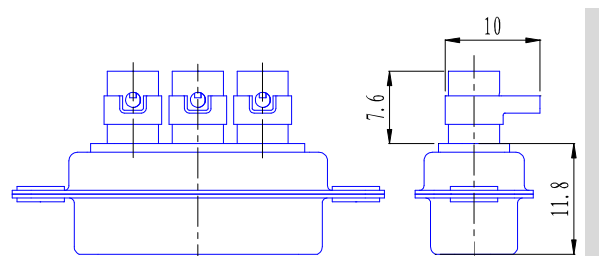
GP、G4P outline size



Contact code	A	Mated cable
GP	1.7	SFF-50-2-1.5
G4P	2.3	SFF-50-2-1

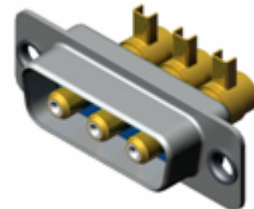
Product Diagram with Plug

Take J18A-3W3P shell for an example

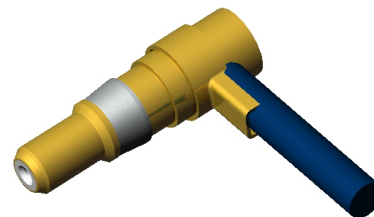


Product Diagram with Plug

Take J18A-3W3P shell for an example



Plug Wiring Diagram



Bent High Frequency Coaxial Receptacle

◆ GS、G2S

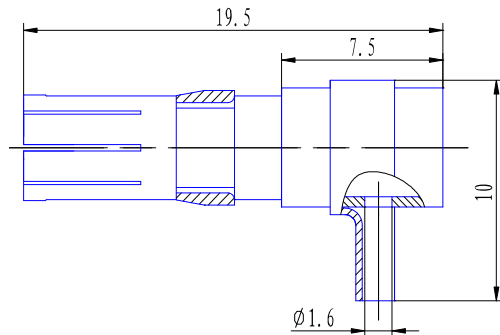
Receptacle 3D Diagram



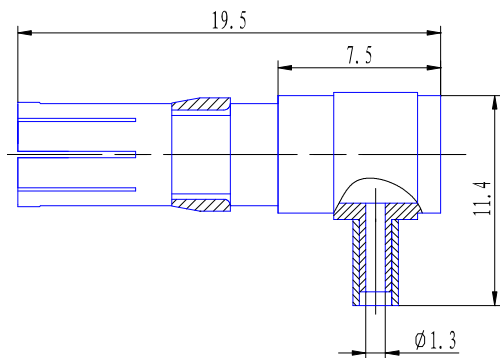
GS

Receptacle Outline Size

GS outline size

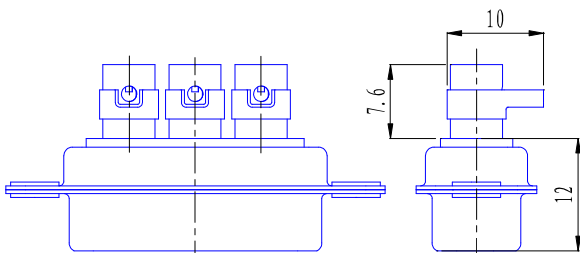


G2S outline size

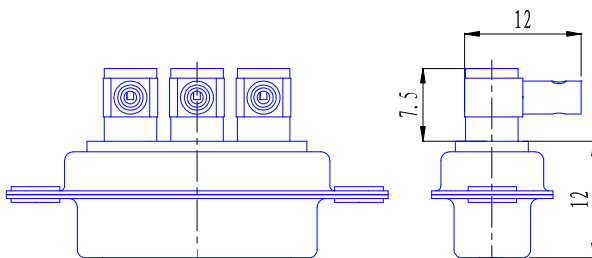


Product Size with Receptacle

Size with "GS" high frequency receptacle (Take J18A-3W3S shell for an example)

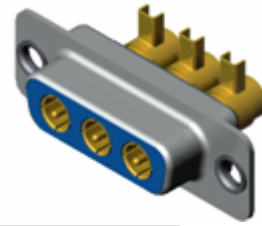


Size with "G2S" high frequency receptacle (Take J18A-3W3S shell for an example)

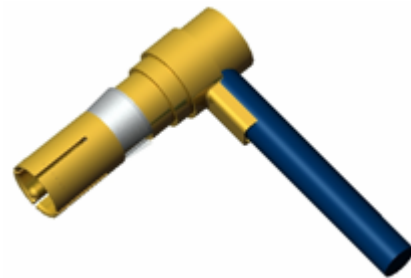


Product Diagram with Receptacle

Take J18A-3W3S shell for an example



Receptacle Wiring Diagram



High Voltage Contact

◆ YP

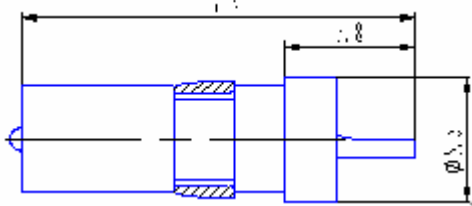
3D Diagram of High Voltage Pin



YP

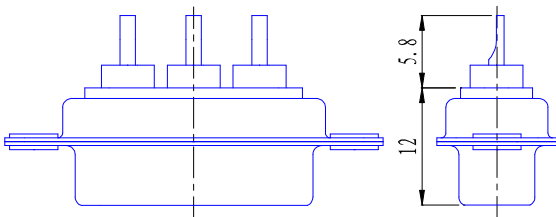
Outline Size of High Voltage Pin

YP outline size



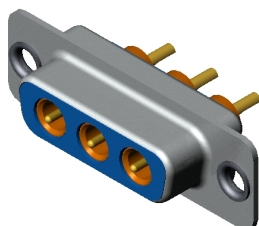
Product Size with High Voltage Pin

Take J18A-3W3S shell for an example



Product Diagram with High Voltage Pin

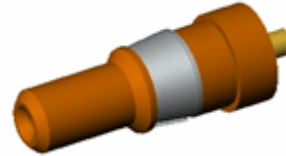
Take J18A-3W3S shell for an example



High Voltage Socket

◆ YS

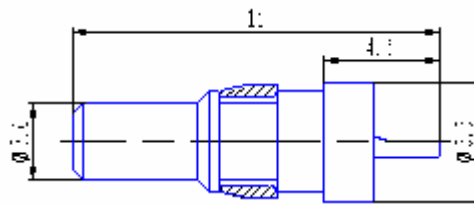
3D Diagram of High Voltage Socket



YS

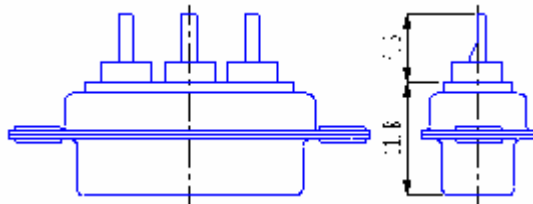
Outline Size of High Voltage Socket

YS outline size



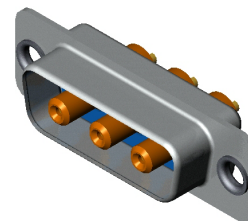
Outline Size of High Voltage Socket

Take J18A-3W3P shell for an example



Product Size with High Voltage Socket

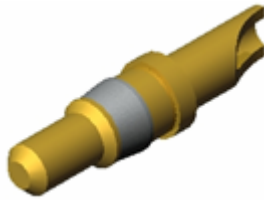
Take J18A-3W3P shell for an example



Solder High Power Pin

◆ HP、H2P、H4P

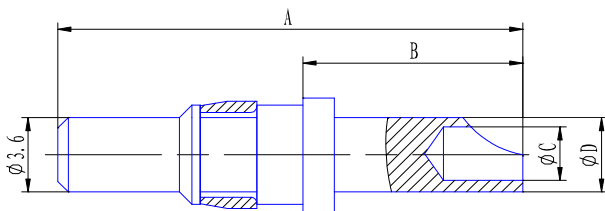
3D Diagram of High Power Pin



HP

Outline Size of High Power Pin

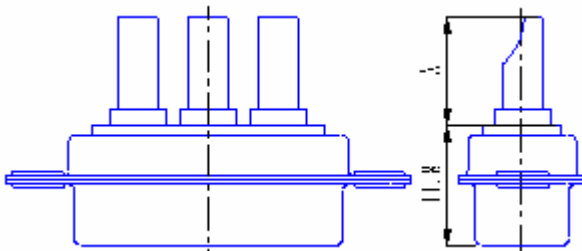
HP、H2P、H4P outline size



Contact code	A	B	C	D
HP	22.2	10.5	2.2	3.9
H2P	16.4	4.7	4.6	5.5
H4P	22.2	10.5	3.8	5.0

Outline Size with High Power Pin

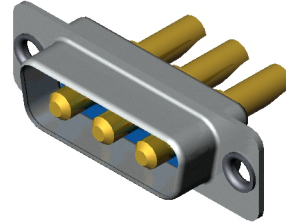
Using J18A-3W3P shell for an example



Contact code	A
HP	10.5
H2P	4.7
H4P	10.5

Product Diagram with High Power Pin

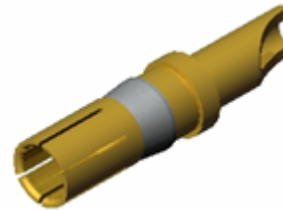
Using J18A-3W3P shell for an example



Solder High Power Socket

◆ HS、H2S、H4S

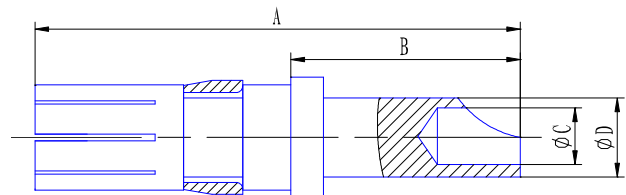
3D Diagram of High Power Socket



HS

Outline Size of High Power Socket

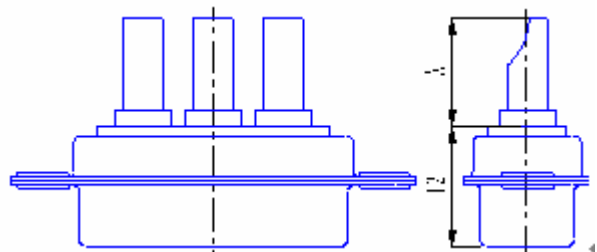
HS、H2S、H4S outline size



Contact code	A	B	C	D
HS	22.2	10.5	2.2	3.9
H2S	16.4	4.7	4.6	5.5
H4S	22.2	10.5	3.8	5.0

Product Diagram with High Power Socket

Take J18A-3W3S shell for an example



Product Diagram with High Power Socket

Take J18A-3W3S shell for an example