

J18 Series\J18 Accessory Series\J18 One-body Metal Cable Clipper (Back shell)

One-body Metal Cable Clipper

Character

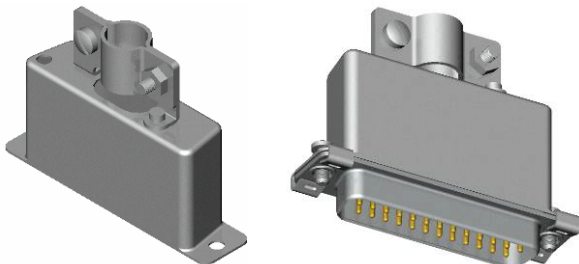
- ◆ Applies to J18 float mounting low frequency solder series and J18 crimping series,
- ◆ Three sub category:
 1. Common – Suitable for male thread locking device: J18E-027(22), J18A-028(22), J18B-029 (22), J18C-030 (22) and J18D-031 (22).
 2. W type – Suitable for M2.5 locking screw: J18-WE, J18-WA, J18-WB, J18-WC and J18-WD
 3. W-Y type – Suitable for #4-40UNC locking screw: J18-WE-Y, J18-WA-Y, J18-WB-Y, J18-WC-Y and J18-WD-Y.
- ◆ Potting hole designed for end user fill in epoxy after assembling.

Outline Size

Common One-body Metal Cable Clipper

- ◆ J18E-027(22)、J18A-028(22)、J18B-029(22)、J18C-030(22)、J18D-031(22)

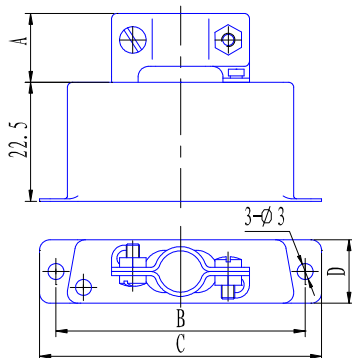
3D Diagram



Before assembling. After assembling with male thread lock part

J18B-029(22)

One-body Metal Cable Clipper Outline Size



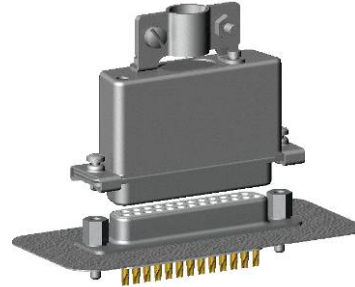
Ordering Marking	A	B	C	D
J18E-027(22)	13.5	25	31	12
J18A-028(22)	14.5	33.3	39.3	12
J18B-029(22)	13.5	47	53.2	12
J18C-030(22)	13.5	63.5	69.5	12
J18D-031(22)	13.5	61.1	67	15.4

Use Instruction

- ◆ Metal clipper on the top of cable clipper is used to clip and fix wire bundle;
- ◆ Cable clipper is suited with male and female thread lock part.

Male Part Mated with Clipper

- ◆ Cable clipper is suited with male and female thread lock part. See the following diagram:



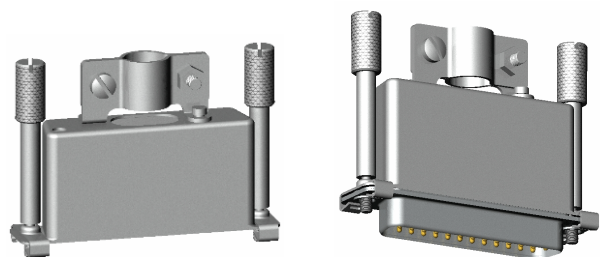
- ◆ The following is male thread lock part suited with cable clipper:

Mated male thread locking part code	Character
20419-B	Thread M2.5, suited with J18E, A, B and C
20419-B-Y	Thread #4-40UNC, suited with J18E, A, B, C
20420-B	Thread M2.5, suited with J18D
20420-B-Y	Thread #4-40UNC, suited with J18D

W and W-Y Type One-body Metal Cable Clipper

- ◆ J18-WE、J18-WA、J18-WB、J18-WC、J18-WD
- ◆ J18-WE-Y、J18-WA-Y、J18-WB-Y、J18-WC-Y、J18-WD-Y

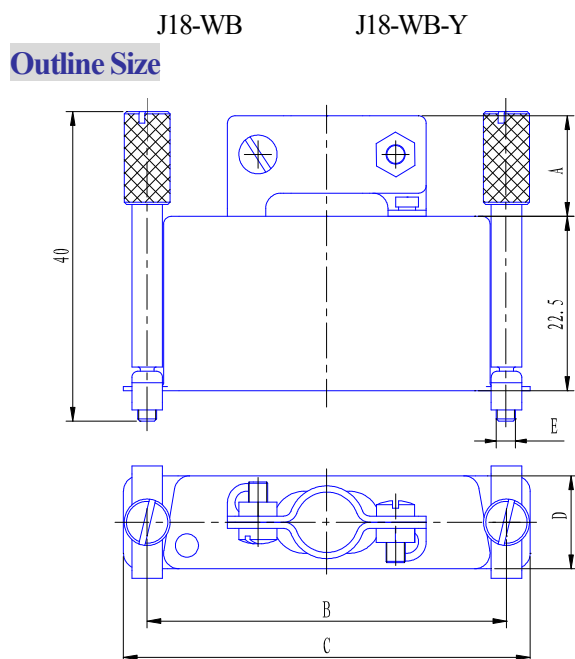
3D Diagram



Before assembling.

After assembling.

J18 Series\J18 Accessory Series\J18 One-body Metal Cable Clipper (Back shell)



Ordering Marking	A	B	C	D	E
J18-WE	13.5	25	31	12	M2.5
J18-WA	14.5	33.3	39.3	12	M2.5
J18-WB	13.5	47	53.2	12	M2.5
J18-WC	13.5	63.5	69.5	12	M2.5
J18-WD	13.5	61.1	76.9	15.4	M2.5
J18-WE-Y	13.5	25	31	12	#4-40UNC
J18-WA-Y	14.5	33.3	39.3	12	#4-40UNC
J18-WB-Y	13.5	47	53.2	12	#4-40UNC
J18-WC-Y	13.5	63.5	69.5	12	#4-40UNC
J18-WD-Y	13.5	61.1	76.9	15.4	#4-40UNC

Use Instruction

◆ Metal clipper on cable clipper top designed to clip and fix wire bundle,

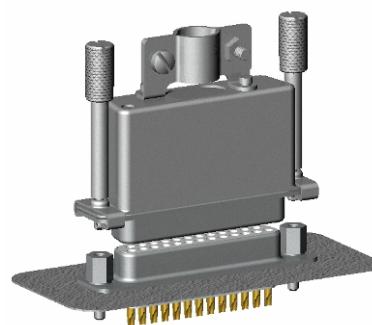
◆ Cable clipper suit female thread lock part. W type suit M2.5 inside thread. W-Y type suit #4-40UNC inside thread.

◆ Cable clipper is recommended to use with float mounting J18 low frequency solder and crimp series.

Male Part Mated with W and W-Y

Type One-body Metal Cable Clipper

◆ Cable clipper suits female thread lock part. See following diagram for reference:



◆ The following female thread locking part suit with cable clipper:

Type	Mated Female Thread Lock Part	Character
Type W	20418-1	Screw head is 4.5mm long, overall 10mm, inside and outside screw are both M2.5.
	20418-2	Screw head is 4.5mm long, overall 12.5mm, inside and outside screw are both M2.5.
	20418-3	Screw head is 5.5 long, overall 16, inside screw is M2.5 and outside screw is M3.
	20418-4	Screw head is 5.5 long, overall 14, inside screw is M2.5 and outside screw is M3.
	20418-5	Screw head is 5.5 long, overall 14, inside and outside screw are both M2.5.
	20418-6	Screw head is 5.5 long, overall 14mm, inside and outside screw are both M2.5, with 1.5mm neck.
	20418-7	Screw head is 5.5 long, overall 14mm, inside and outside screw are both M2.5, with 2mm neck.
	20418-2B	Screw head is 5.5 long, overall 16, inside and outside screw are both M2.5, with 5.5 supporting tube.
	20418-2C	Screw head is 5.5 long, overall 18, inside and outside screw are both M2.5, with 5.5 supporting tube.
	20418-2D	Screw head is 5.5 long, overall 20, inside and outside screw are both M2.5, with 5.5 supporting tube.
	20418-1-Y	Screw head is 4.5mm long, overall 10mm inside screw is #4-40UNC and outside screw is M2.5.
	20418-2-Y	Screw head is 4.5mm long, overall 12.5mm inside screw is #4-40UNC and outside screw is M2.5.
Type W-Y	20418-5-Y	Screw head is 4.5mm long, overall 14mm inside screw is #4-40UNC and outside screw is M2.5.
	20418-2D-Y	Screw head is 5.5mm long, overall 20mm inside screw is #4-40UNC and outside screw is M2.5 with 5.5 supporting tube.

J18 Series\J18 Accessory Series\J18 Male Thread Lock Part Clipper

Male Thread Lock Part Character

◆ Male thread locking part applies to J18 float mounting low frequency solder series and J18 crimp series;

◆ Style:

Common type – Direct installed into connector.

-B – suits one-body metal cable clipper.

◆ Inside female part thread –

1. M2.5

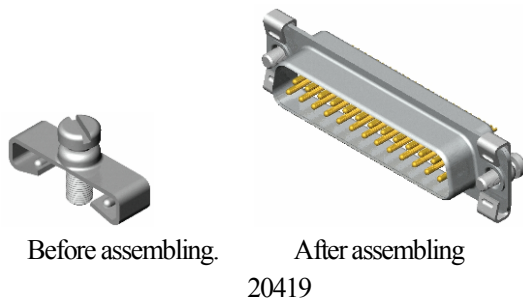
2. #4-40UNC.

Common Male Thread Lock Part

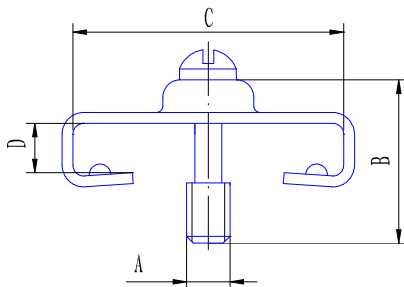
◆ 20419、20419-Y、20419-C

◆ 20420、20420-Y、20420-C

3D Diagram



Outline Size



Order	A	B	C	D	Remark
20419	M2.5	6.8	13	1.4	Apply to J18E, J18A, J18B and J18C.
20419-Y	#4-40UNC	6.8	13	1.4	
20419-C	M2.5	6	13	1.4	
20420	M2.5	6.8	16	1.4	Apply to J18D.
20420-Y	#4-40UNC	6.8	16	1.4	
20420-C	M2.5	6	16	1.4	

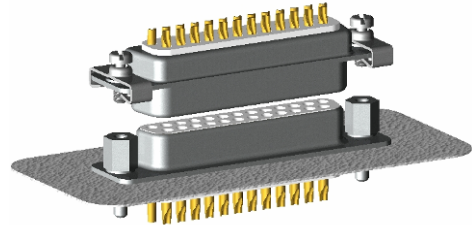
User Instruction

◆ Male thread lock part can be installed into J18 float mounting series directly;

◆ Gently insert male thread part into female section. Higher force may cause damage on parts.

Male Part Mated with Common Type

◆ Following diagram shows male thread locking part suits female thread locking part.



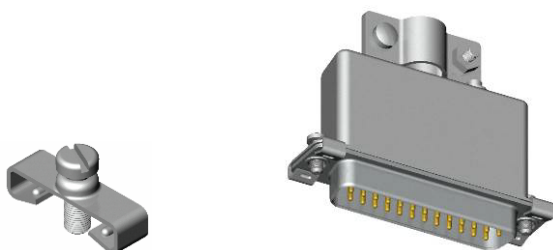
◆ Compatible male and female part table:

Male Part Code	Mated female Part Code	Character
20419 20420 20419-C 20420-C	20418-1	Screw head is 4.5mm long, overall 10mm, inside and outside screw are both M2.5.
	20418-2	Screw head is 4.5mm long, overall 12.5mm, inside and outside screw are both M2.5.
	20418-3	Screw head is 5.5 long, overall 16, inside screw is M2.5 and outside screw is M3.
	20418-4	Screw head is 5.5 long, overall 14, inside screw is M2.5 and outside screw is M3.
	20418-5	Screw head is 5.5 long, overall 14, inside and outside screw are both M2.5.
	20418-6	Screw head is 5.5 long, overall 14mm, inside and outside screw are both M2.5, with 1.5mm neck.
	20418-7	Screw head is 5.5 long, overall 16mm, inside and outside screw are both M2.5, with 2mm neck.
	20418-2B	Screw head is 5.5 long, overall 16, inside and outside screw are both M2.5, with 5.5 supporting tube.
	20418-2C	Screw head is 5.5 long, overall 18, inside and outside screw are both M2.5, with 5.5 supporting tube.
	20418-2D	Screw head is 5.5 long, overall 20, inside and outside screw are both M2.5, with 5.5 supporting tube.
20419-Y 20420-Y	20418-1-Y	Screw head is 4.5mm long, overall 10mm, inside and outside screw are both #4-40UNC
	20418-2-Y	Screw head is 4.5mm long, overall 12.5mm, inside and outside screw are both #4-40UNC
	20418-5-Y	Screw head is 4.5mm long, overall 14mm, inside and outside screw are both #4-40UNC, with 1.5 shoulders.
	20418-2D-Y	Screw head is 5.5 long, overall 20, inside and outside screw are both #4-40UNC with 5.5 supporting tube.

“-B” Type Male Thread Lock Part

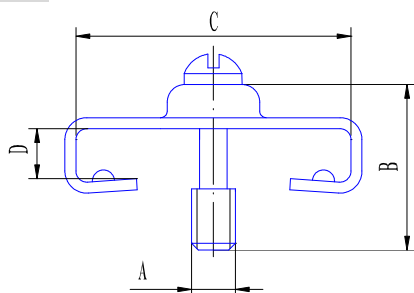
- ◆ 20419-B、20419-B-Y
- ◆ 20420-B、20420-B-Y

3D Diagram



20419-B

Outline Size



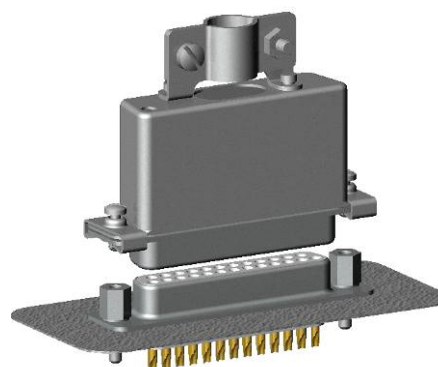
Order Mark	A	B	C	D	Remark
20419-B	M2.5	6.8	13.5	1.8	Apply to J18E, J18A, J18B, and J18C, suited with one-body metal cable cover.
20419-B-Y	#4-40UNC	6.8	13.5	1.8	
20420-B	M2.5	6.8	16.5	1.8	Apply to J18D suited with one-body metal cable cover.
20420-B-Y	#4-40UNC	6.8	16.5	1.8	

■ Use Instruction

- ◆ Male thread locking part can be installed in J18 float mounting series with one-body metal cable clipper;
- ◆ Gently insert male thread part into female section. Higher force may cause damage on parts.

■ Male Part Mated with “-B” Type

- ◆ Male thread locking part has to be assembled with one-body metal cable clipper first before plug into female thread lock part. See the following diagram for reference:



- ◆ One-body metal cable clipper and female thread locking part table :

Male Lock Code	Thread Part	Mated One-body Metal Cable Clipper Code	Mated Thread Lock Code	Female Lock Part
20419-B 20420-B		J18E-027(22) J18A-028(22) J18B-029(22) J18C-030(22) J18D-031(22)	20418-1 20418-2 20418-3 20418-4 20418-5 20418-6 20418-7 20418-2B 20418-2C 20418-2D	
20419-B-Y 20420-B-Y		J18E-027(22) J18A-028(22) J18B-029(22) J18C-030(22) J18D-031(22)	20418-1-Y 20418-2-Y 20418-5-Y 20418-2D-Y	